

# Kjeller (ENKJ)

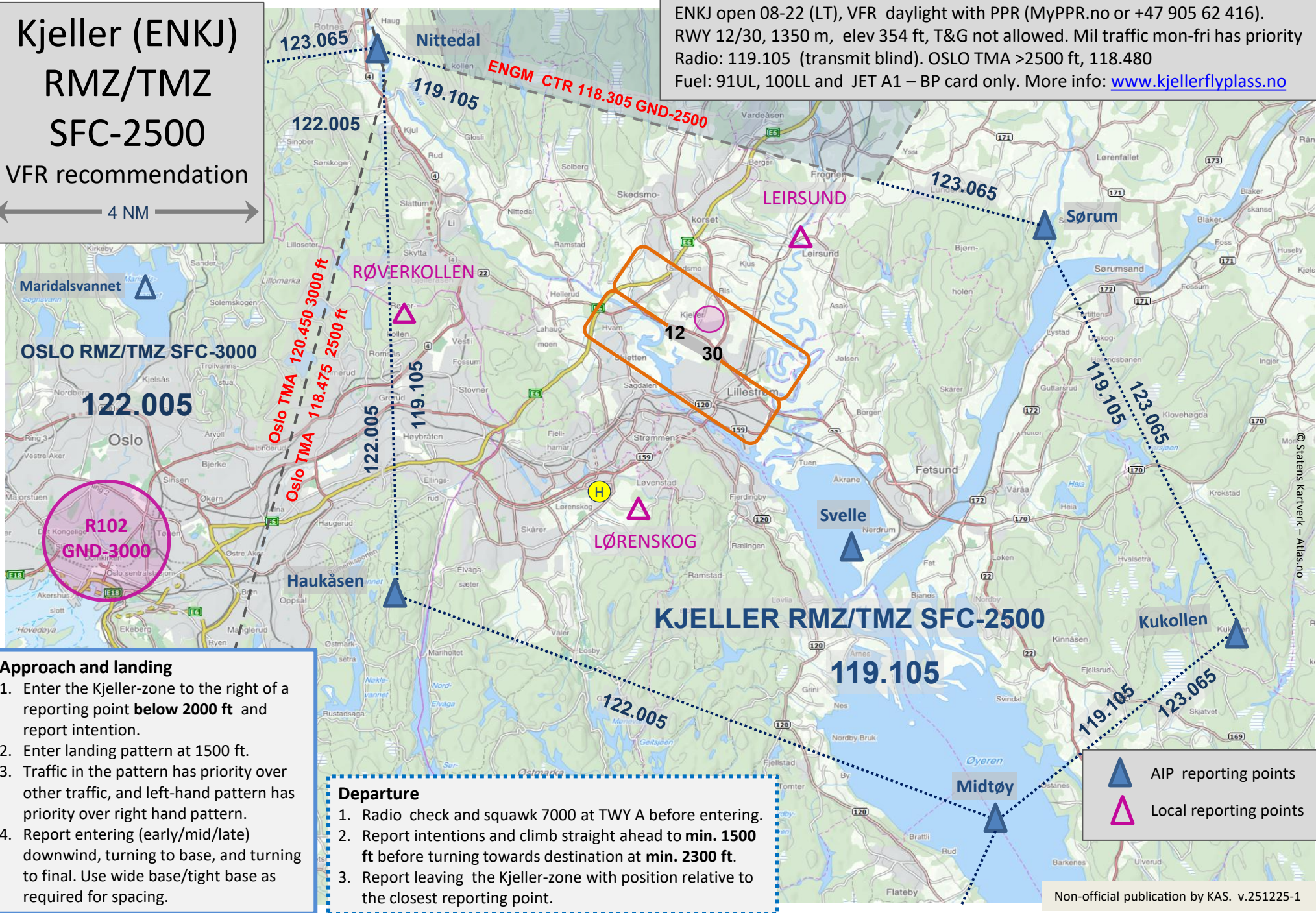
## RMZ/TMZ

## SFC-2500

VFR recommendation

4 NM

ENKJ open 08-22 (LT), VFR daylight with PPR (MyPPR.no or +47 905 62 416).  
RWY 12/30, 1350 m, elev 354 ft, T&G not allowed. Mil traffic mon-fri has priority  
Radio: 119.105 (transmit blind). OSLO TMA >2500 ft, 118.480  
Fuel: 91UL, 100LL and JET A1 – BP card only. More info: [www.kjellerflyplass.no](http://www.kjellerflyplass.no)





**Notes:**

1. RMZ/TMZ in G-airspace below 3000/2500 ft in west/east part.
2. Keep to the right if passing close by reporting points (VRP).
3. Report position relative to VRPs, incl. altitude and intention.
4. Enter Kjeller-zone at/below 2000 ft.
5. Exit Kjeller-zone above 2300 ft.

The airspace below TMA is uncontrolled, with no requirement for communication between aircraft and ATS, but the relevant RMZ frequency must be monitored, and blind transmissions sent. For aircraft with two radios or ability to monitor two frequencies, it is possible to contact Oslo Approach on 118.480 (east) or 120.455 (west) or Farris 134.355 (south) while monitoring the RMZ frequency. Use transponder with code 7000 in the TMZ zones.

**Use frequency 123.065 in G airspace outside Oslo and Kjeller RMZ.**

**Caution:** Training aircraft can operate in- and below danger areas ENDxxx. Request traffic information by Oslo Approach on 118.480 and monitor 123.065 if required to transit these areas.

